
Addison Road, Banbury, Oxfordshire, OX16



£169,950

Situated on a corner plot in the highly prized Easington area of Banbury is this 3 bedroom semi detached family home. Offering a sitting room, dining room, kitchen, 3 bedrooms, a separate w.c. and bathroom. Outside is a well proportioned, south west facing rear garden and driveway. The property requires modernising and is offered for sale with no onward chain.

Accommodation

3 Bedrooms

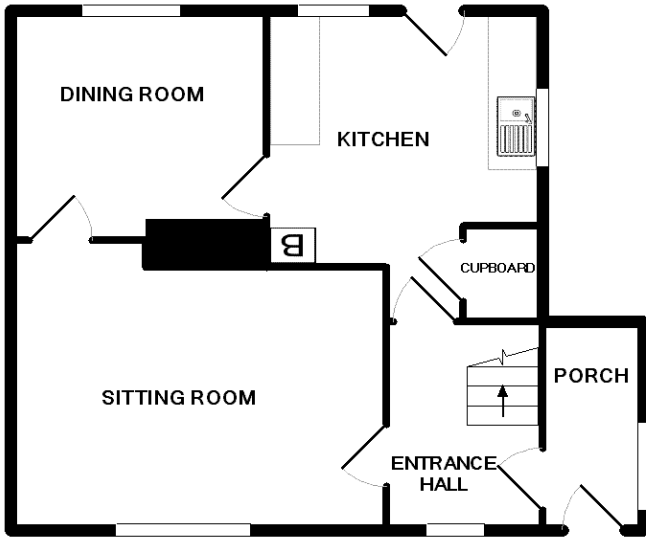
2 Receptions

1 Bathroom

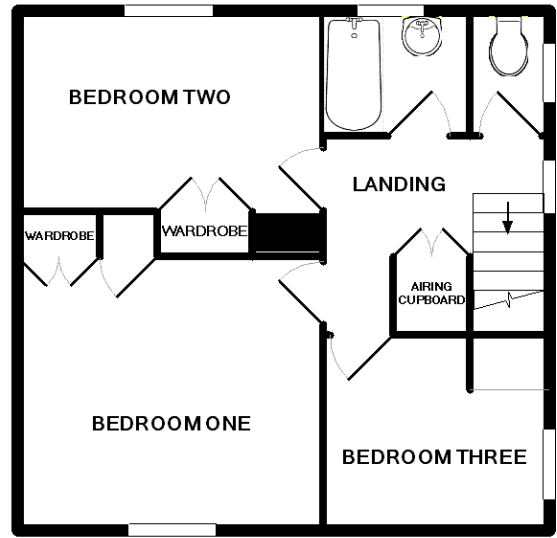
Pictures



Floorplans



GROUND FLOOR



1ST FLOOR

Whilst every attempt has been made to ensure the accuracy of the floor plan contained here, measurements of doors, windows, rooms and any other items are approximate and no responsibility is taken for any error, omission, or mis-statement. This plan is for illustrative purposes only and should be used as such by any prospective purchaser. The services, systems and appliances shown have not been tested and no guarantee as to their operability or efficiency can be given.
Made with Metropix ©2010



Energy Performance Certificate